



RACECOURSE
MARINA & LODGES
WINDSOR



AVAILABLE FOR IMMEDIATE OCCUPANCY

ETON LODGE - PLOT 10

 3 bed  2 bath  92 sq m

£465,000

PHONE: +44 (0) 1753 910750

WEB: www.racecoursemarina.com

EMAIL: info@racecoursemarina.com



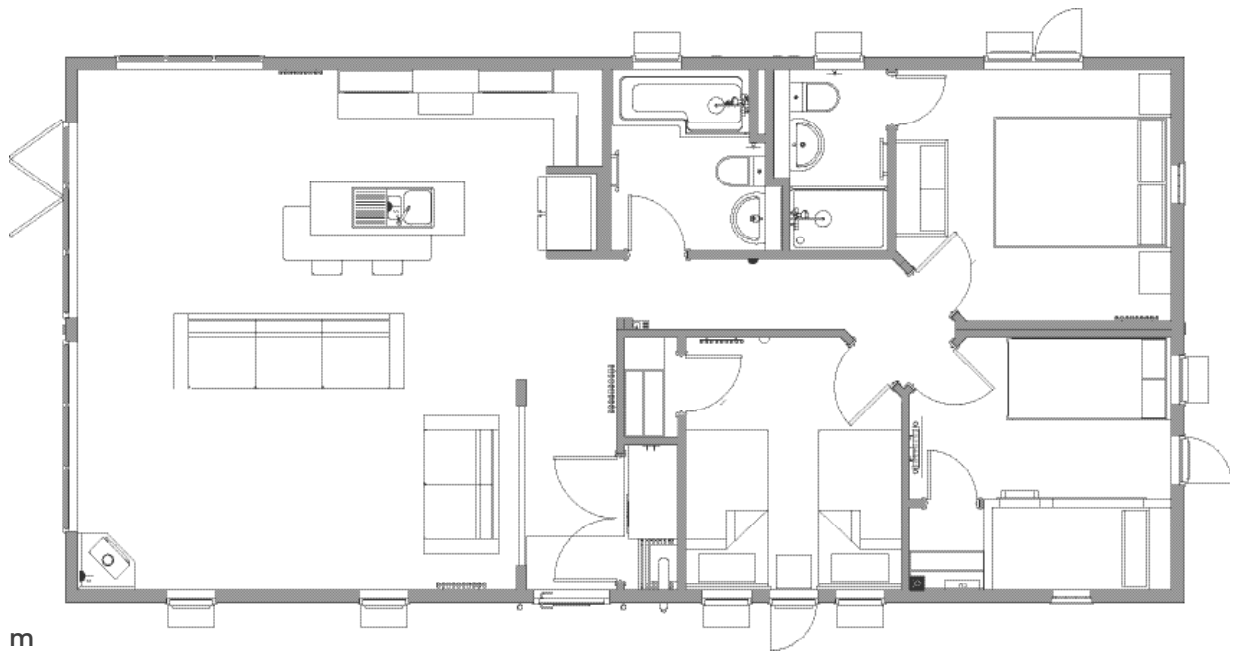
The Eton Lodge on Plot 10 is a luxurious retreat nestled in the heart of the development with awe-inspiring views of the marina. This exquisite home offers an unparalleled living experience in a prime location, situated prominently in the front row.

As you approach "The Eton Lodge," you will be captivated by its striking architectural design, blending modern aesthetics with timeless elegance. The exterior features large windows that not only flood the interior with natural light but also offer breathtaking vistas of the marina's glistening waters.

The rear patio beckons with its inviting atmosphere, providing a seamless transition between indoor and outdoor living. Spend leisurely afternoons lounging on plush outdoor furniture or hosting al fresco gatherings amidst the picturesque backdrop of the marina.



ETON LODGE FLOOR PLAN



LUX APPLIANCES
stylish and functional



FAST WI-FI
providing wireless control



DECKED TERRACE
complete with balustrade



PARKING PLACES
for up to two vehicles



DOUBLE GLAZED
for your comfort



IDYLLIC VIEWS
along the marina



LOCAL AMENITIES
with easy access



OPEN PLAN
built to be exclusive

DISCLAIMER

This brochure (the description, images and measurements herein) do not form any part of a contract. Whilst every effort has been made to ensure accuracy, this cannot be guaranteed. Site maps and floor plans contained within this brochure are not to scale and are subject to change. The information and imagery contained in this brochure is for guidance purposes only and does not constitute a contract, part of a contract or warranty.

Racecourse Marina and Lodges, Maidenhead Road, Windsor SL4 5HT



**RACECOURSE
MARINA & LODGES**
WINDSOR